



What happens to your
general waste in the
Borders?

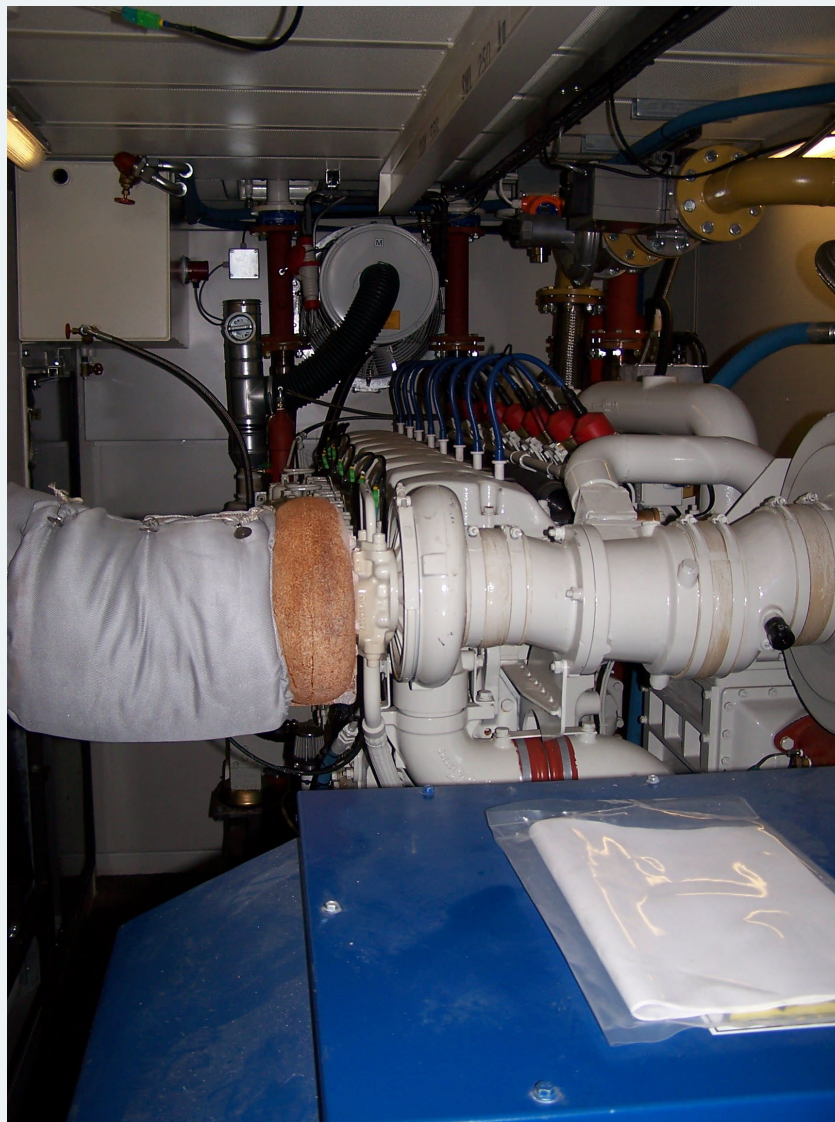
Previously all waste
went to landfill.

Borders has 3 closed
landfill sites





- Scotland had a landfill diversion ban by 2021
- SBC closed its landfill site in June 2019
- Procurement of a new waste contract for residual, bulky, street sweepings and construction and demolition waste.
- 2021 increase in the Councils recycling rate to 54.8%, in 2021 29, 910 tonnes of material was recycled across the Scottish Borders.





- Household waste is now treated at a energy from waste plant at Levenseat in South Lanarkshire.
- Household and bulky waste is pre-treated to remove recycling material. Metals, wood, plastic, bulky material, mattresses.
- Video of new SBC Waste transfer station
- Video of Levenseat facility

- Dry Mixed Recycling – what happens to your blue bin when it is collected.



















- Recycling material is sold on the global market by brokers.
- Why do different MRFs accept different material?
- Level of risk/ equipment in plant.
- Local authorities now have risk share contracts for recycling.



- Where does the recycling material go?

Paper and card	Germany, China,
Aluminium cans	England,
Beverage cartons	England
LDPE Polythene	India, Vietman
Plastic bottle and trays	Belgium, China, Taiwan, Vietnam
Steel cans	England
Cardboard	China, Hong Kong, Indonesia
News & Palms	Germany, England

Recycling centres





Community Recycling Centres

- household cooking oil
- wood and timber
- garden waste
- hardcore and rubble (not at Selkirk)
- car batteries
- scrap metal
- used engine oil
- domestic batteries
- fridges and freezers
- large electrical appliances
- fluorescent tubes
- small electrical appliances
- TVs and monitors
- glass bottles and jars
- textiles and clothes
- books and music
- gas cylinders/bottles (not at Selkirk)



Tesco, Galashiels – Recycling Point

Recycling Points

- Over 70 Recycling Points are strategically located across the Borders for the following materials:
 - Glass
 - Textiles
 - Books
 - Electrical Appliances
- The points are serviced and maintained by partner organisations; Biffa, Nathans, British Heart Foundation and Restructa.



Eshiels Community Recycling Centre – Re-Use Cabin

Re-Use Cabins

- The Council operates [reuse cabins](#) at Selkirk, Hawick and Eshiels Community Recycling Centres, coming soon to Duns.
- Donated items are refurbished by our re-use partners; Homebasics, JustCycle, Peebles Community Trust and Hawick Mens Shed.
- The following items are accepted for re-use:
 - Large Domestic Appliances
 - Furniture
 - Brick-a-brack
 - Garden Tools
 - Wood off cuts
- [Bikes](#) are accepted at all Councils Community Recycling Centres.



How to contact the Waste services

0300 100 1800

E-mail the team Reducereuserecycle@scotborders.gov.uk

Visit the website www.scotborders.gov.uk/recycling